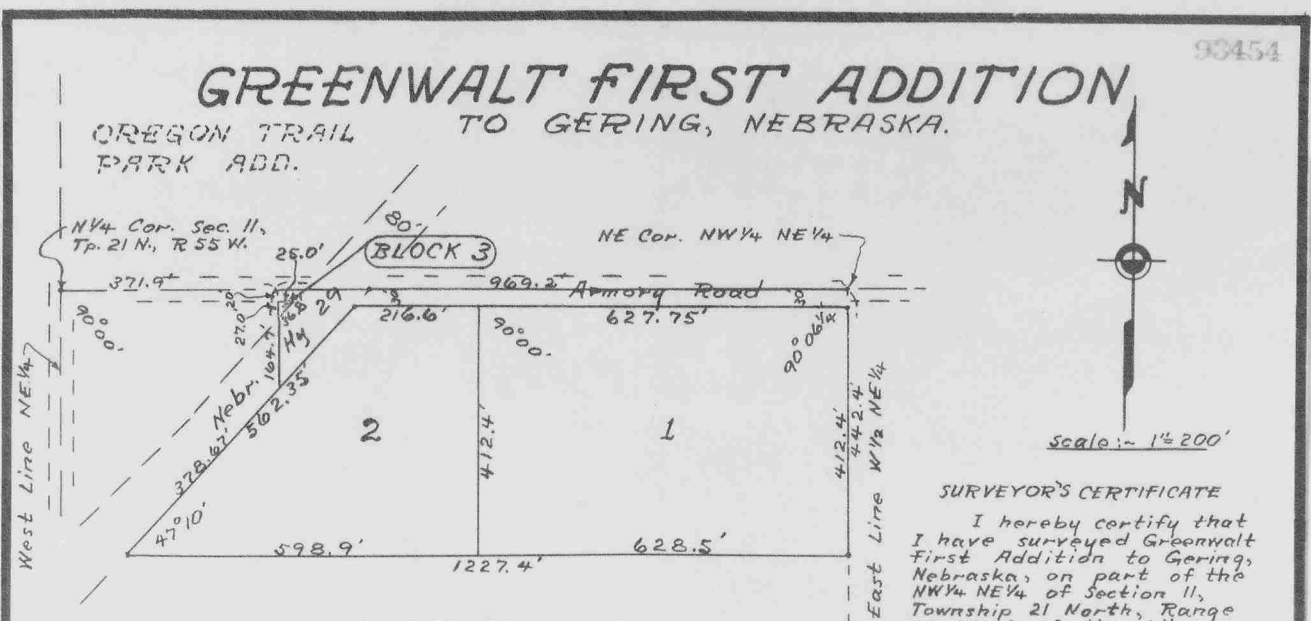


Note See Replat of Block 1, Greenwalt First Addition, Deed 211-708



**SURVEYOR'S CERTIFICATE**

I hereby certify that I have surveyed Greenwalt First Addition to Gering, Nebraska, on part of the NW 1/4 NE 1/4 of Section 11, Township 21 North, Range 55 West of the 6th Principal Meridian, Scotts Bluff County, Nebraska, more particularly described as follows:-

Beginning at the northeast corner of said NW 1/4 NE 1/4;

Thence West along the north line of said NW 1/4 NE 1/4, for a distance of 969.2 feet, to a point 371.9 feet east from the northwest corner NW 1/4 NE 1/4;

Thence South at right angles to said north line NW 1/4 NE 1/4, for a distance of 164.7 feet, more or less, to intersect the southeasterly right-of-way line of State Highway 29;

Thence S. 42°50' W. along said Highway right-of-way line, for a distance of 378.67 feet;

Thence East, parallel with said north line NW 1/4 NE 1/4, for a distance of 1227.4 feet, more or less, to the east line of said NW 1/4 NE 1/4;

Thence N. 0°06' W. along said east line NW 1/4 NE 1/4, for a distance of 442.4 feet, to the point of beginning, subject to State Highway right-of-way.

This plat is a correct delineation of said survey, drawn to the scale of 200 feet to the inch. All block corners are marked with 1/8" x 48" iron rods. Dimensions are in feet and decimals, and blocks are numbered 1, 2 and 3 as indicated on plat.

WITNESS my hand this 16th day of April, 1962.

William E. Keefover  
 Wm. E. Keefover -  
 Surveyor L.S.-16 Nebr.

**DEDICATION**

KNOW ALL MEN BY THESE PRESENTS:-

That the undersigned Roy D. Greenwalt and Jewell E. Greenwalt, husband and wife, and General Investment Corporation of Scottsbluff, a Nebraska Corporation, Gering, Nebraska, are the owners of that part of the NW 1/4 NE 1/4 of Section 11, Township 21 North, Range 55 West of the 6th Principal Meridian, Scotts Bluff County, Nebraska, upon which Greenwalt First Addition is located.

That said owners have caused said land to be surveyed and platted as Greenwalt First Addition to Gering, Nebraska, as shown by this plat and surveyor's certificate.

We, the owners hereby dedicate the streets, roads and ways as shown and designated on the plat, to the use and benefit of the public.

IN WITNESS WHEREOF, the said owners have executed these presents this 17th day of April, 1962.

Jewell E. Greenwalt Wife  
Roy D. Greenwalt Husband

L. Verne H. Hansen Secretary  
W. Douglas Gilbaugh President  
 GENERAL INVESTMENT CORPORATION OF SCOTTSBLUFF, Gering, Nebr.

STATE OF NEBRASKA } S.S.  
 SCOTTS BLUFF COUNTY }

On this 17th day of April, 1962, before me, the undersigned, a Notary Public qualified for said County, personally came Roy D. Greenwalt and Jewell E. Greenwalt, husband and wife, to me known to be the identical persons whose names are affixed to the foregoing plat and dedication, and acknowledged the same and the execution thereof to be their voluntary act and deed.

Witness my hand and notarial seal the day and year last above written.

Charles F. Fritke  
 Notary Public.  
 My Commission Expires Feb. 23, 1965

STATE OF NEBRASKA } S.S.  
 SCOTTS BLUFF COUNTY }

Before me, a notary public qualified for said county, personally came W. Douglas Gilbaugh, President of General Investment Corporation of Scottsbluff, a Nebraska Corporation, Gering, Nebraska, known to me to be the President and identical person who signed the foregoing instrument, and acknowledged the same and the execution thereof to be his voluntary act and deed as such officer and the voluntary act and deed of said corporation and that its corporate seal was thereto affixed by its authority.

Witness my hand and notarial seal on this 17th day of April, 1962.

Charles F. Fritke  
 Notary Public.  
 My Commission Expires Feb. 23, 1965

The foregoing plat of Greenwalt First Addition is accepted by the City of Gering, Nebraska as an addition to said City, this 17th day of April, 1962.

Earl A. Holcomb Mayor  
Clarence M. Larsen City Clerk