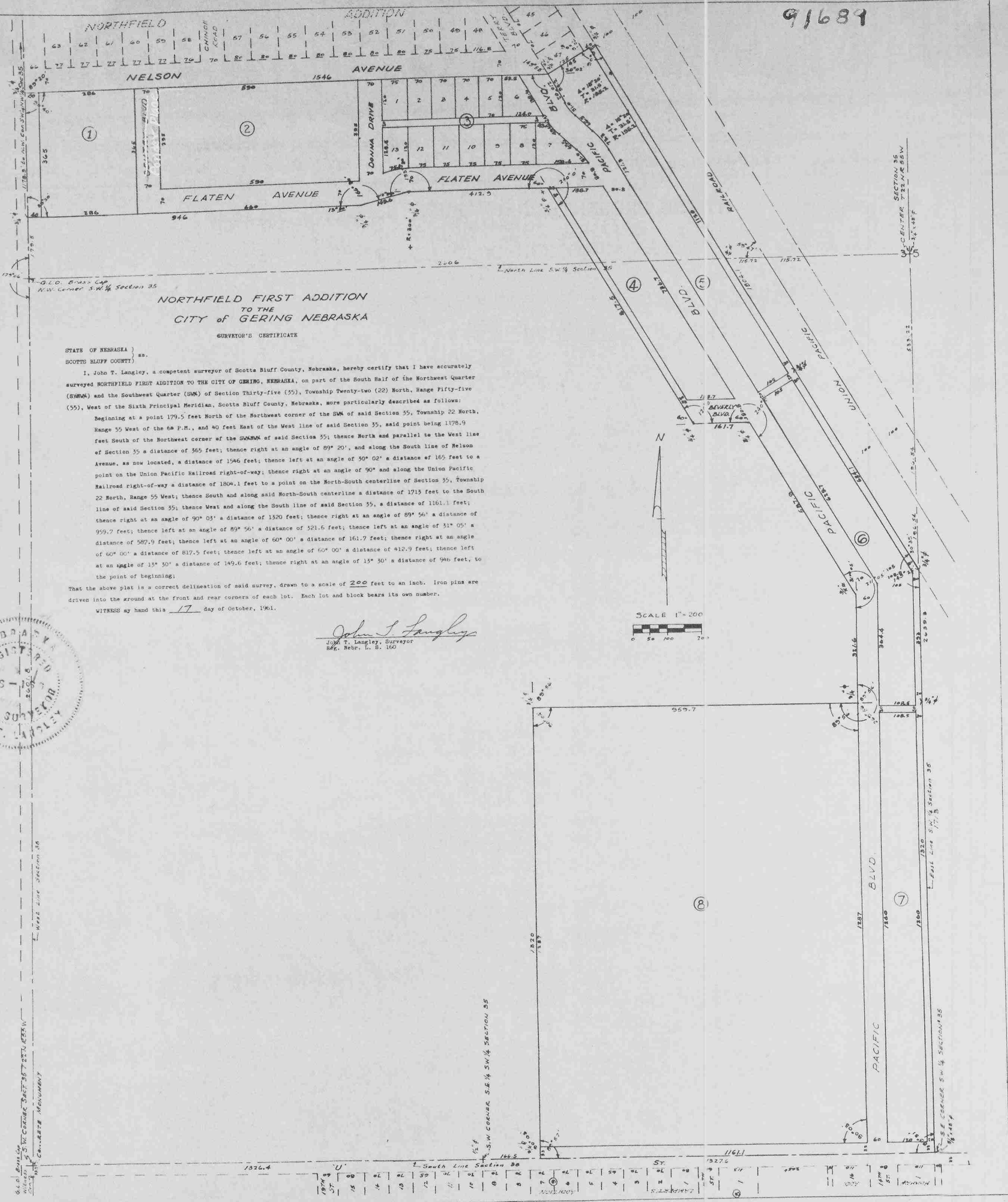


See Replat of Block 7
Deed Bk 105-423

See Ord. No 806
Misc 85-492
Gentry Blvd. To Ponder Place

91689



**NORTHFIELD FIRST ADDITION
TO THE
CITY OF GERING, NEBRASKA**

STATE OF NEBRASKA)
SCOTTS BLUFF COUNTY) ss.

I, John T. Langley, a competent surveyor of Scotts Bluff County, Nebraska, hereby certify that I have accurately surveyed NORTHFIELD FIRST ADDITION TO THE CITY OF GERING, NEBRASKA, on part of the South Half of the Northwest Quarter (SW 1/4) and the Southwest Quarter (SW 1/4) of Section Thirty-five (35), Township Twenty-two (22) North, Range Fifty-five (55), West of the Sixth Principal Meridian, Scotts Bluff County, Nebraska, more particularly described as follows:

Beginning at a point 179.5 feet North of the Northwest corner of the SW 1/4 of said Section 35, Township 22 North, Range 55 West of the 6th P.M., and 40 feet East of the West line of said Section 35, said point being 1178.9 feet South of the Northwest corner of the SW 1/4 of said Section 35; thence North and parallel to the West line of Section 35 a distance of 365 feet; thence right at an angle of 89° 20', and along the South line of Nelson Avenue, as now located, a distance of 1546 feet; thence left at an angle of 50° 02' a distance of 165 feet to a point on the Union Pacific Railroad right-of-way; thence right at an angle of 90° and along the Union Pacific Railroad right-of-way a distance of 1804.1 feet to a point on the North-South centerline of Section 35, Township 22 North, Range 55 West; thence South and along said North-South centerline a distance of 1715 feet to the South line of said Section 35; thence West and along the South line of said Section 35, a distance of 1161.1 feet; thence right at an angle of 90° 05' a distance of 1320 feet; thence right at an angle of 89° 56' a distance of 959.7 feet; thence left at an angle of 89° 56' a distance of 321.6 feet; thence left at an angle of 31° 05' a distance of 587.9 feet; thence left at an angle of 60° 00' a distance of 161.7 feet; thence right at an angle of 60° 00' a distance of 817.5 feet; thence left at an angle of 60° 00' a distance of 412.9 feet; thence left at an angle of 15° 30' a distance of 149.6 feet; thence right at an angle of 15° 30' a distance of 946 feet; to the point of beginning;

That the above plat is a correct delineation of said survey, drawn to a scale of 200 feet to an inch. Iron pins are driven into the ground at the front and rear corners of each lot. Each lot and block bears its own number.

WITNESS my hand this 17 day of October, 1961.

John T. Langley
John T. Langley, Surveyor
Reg. Nebr. L. S. 160

