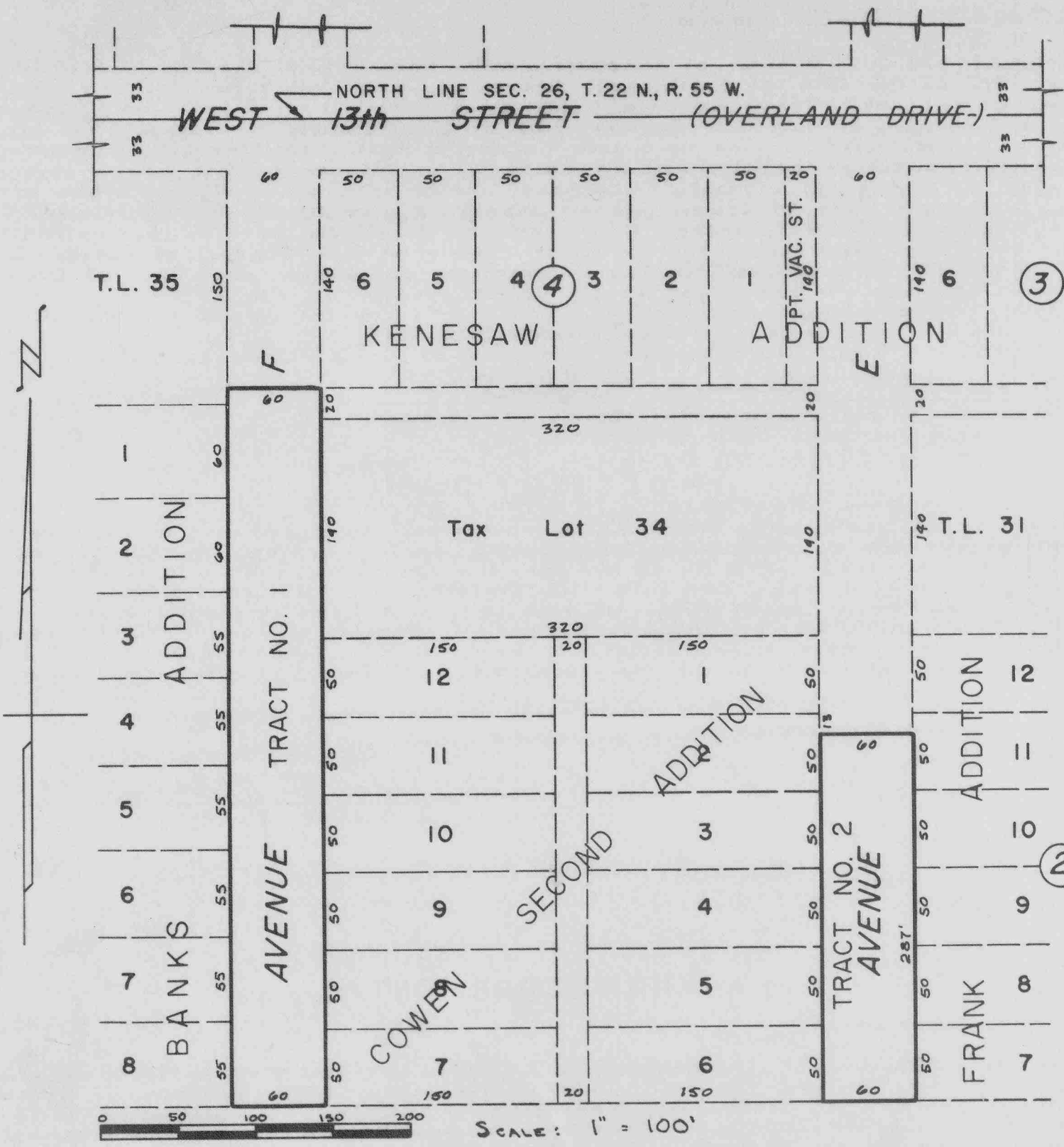


PLAT AND DEDICATION OF PARTS OF AVENUES "E" AND "F"
IN THE CITY OF SCOTTSBLUFF, NEBRASKA



- SURVEYOR'S CERTIFICATE -

STATE OF NEBRASKA }
SCOTTS BLUFF COUNTY } ss:

I, KENNETH GEORGE ROBERTS, City Engineer for the City of Scottsbluff, Nebraska and Nebraska Registered Land Surveyor L.S. 33 do hereby certify that I have surveyed parts of Avenues "E" and "F" in the City of Scottsbluff, Scotts Bluff County, Nebraska, situated in the Northwest Quarter (NW 1/4) of Section Twenty-six (26), Township Twenty-two (22) North, Range Fifty-five (55) West of the sixth P.M.; more particularly described as follows:

TRACT NO. 1: A tract of land generally known and used as a part of Avenue "F" of the City of Scottsbluff, Nebraska, and more particularly described as follows: Beginning at the Southwest corner of Lot Six (6), Block Four (4), Kenesaw Addition, an addition to the City of Scottsbluff, Nebraska; thence in a westerly direction along a westerly extension of the south line of such Lot Six (6) a distance of sixty (60) feet; thence in a southerly direction parallel to a southerly extension of the west line of such Lot Six (6) a distance of ten (10) feet to the northeast corner of Lot One (1), Banks Addition, an addition to the City of Scottsbluff, Nebraska; thence in a southerly direction along the east line of such Banks Addition to the southeast corner of Lot Eight (8) of such Banks Addition; thence in an easterly direction to the southwest corner of Lot Seven (7) of Cowen Second Addition, an addition to the City of Scottsbluff, Nebraska; thence in a northerly direction along the west line of such Cowen Second Addition to the northwest corner of Lot Twelve (12) of Cowen Second Addition; thence in a northerly direction along a northerly extension of such west line to the point of beginning.

PLAT AND DEDICATION OF PARTS OF AVENUES "E" AND "F"
IN THE CITY OF SCOTTSBLUFF, NEBRASKA (Continued)

SURVEYOR'S CERTIFICATE (Continued)

TRACT NO. 2: A tract of land generally known and used as a part of Avenue "E" in the City of Scottsbluff, Nebraska, and more particularly described as follows: Beginning at a point on the east line of Lot One (1), Cowen Second Addition, an addition to the City of Scottsbluff, Nebraska, that is thirteen (13) feet south of the northeast corner of such Lot One (1); thence in an easterly direction parallel to an easterly extension of the north line of Lot One (1) a distance of sixty (60) feet; thence in a southerly direction parallel to the east line of Cowen Second Addition a distance of two hundred eighty-seven (287) feet; thence in a westerly direction parallel to an easterly extension of Lot One (1) to the southeast corner of Lot Six (6) of Cowen Second Addition; thence in a northerly direction along the east line of Cowen Second Addition to the point of beginning.

That the accompanying plat is a true and correct delineation of said survey drawn to a scale of 1 inch equals 100 feet.

WITNESS MY HAND AND SEAL this 6th day of OCTOBER 1961.

Kenneth George Roberts

Kenneth George Roberts, Scottsbluff, Nebraska City Engineer
Nebraska Registered Land Surveyor L.S. 33

(SEAL)

- DEDICATION -

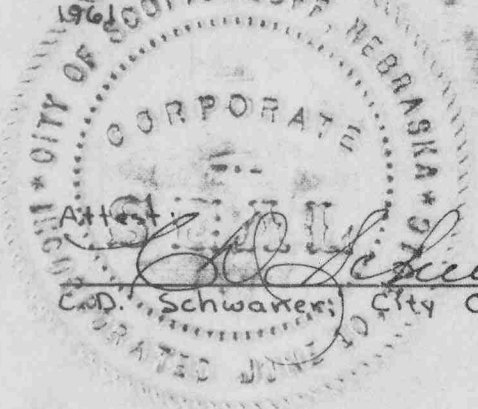
The City of Scottsbluff, Nebraska a municipal corporation being the owner of the parcels of land situated in the NW 1/4 Section 26, Tp. 22 N., R. 55 W. of the Sixth P.M. as shown on the foregoing plat and surveyor's certificate, does hereby dedicate the Streets and Avenues, designated upon and referred to in said plat, to the use and benefit of the public.

IN WITNESS WHEREOF, I, William E. Nichol, Mayor of the City of Scottsbluff, Nebraska, have hereunto set my hand and caused the seal of the City of Scottsbluff, Nebraska to be hereunto affixed this 9th day of October, 1961.

City of Scottsbluff, Nebraska
A Municipal Corporation

William E. Nichol

William E. Nichol, Mayor



C. D. Schwaner
C. D. Schwaner, City Clerk

- ACKNOWLEDGEMENT -

STATE OF NEBRASKA }
SCOTTS BLUFF COUNTY } ss:

On this 9th day of October, 1961, before me, a Notary Public, duly commissioned in and for said County, personally came William E. Nichol, Mayor of the City of Scottsbluff, Nebraska, and Charles D. Schwaner, City Clerk of the City of Scottsbluff, Nebraska, to me known to be the identical persons whose names are affixed to the foregoing plat and dedication and acknowledged the same to be their voluntary acts and deeds, as such officers and the voluntary act and deed of the City of Scottsbluff, Nebraska, a municipal Corporation.

Witness My Hand and Notarial Seal the day and year last above written.

Kenneth G. Roberts

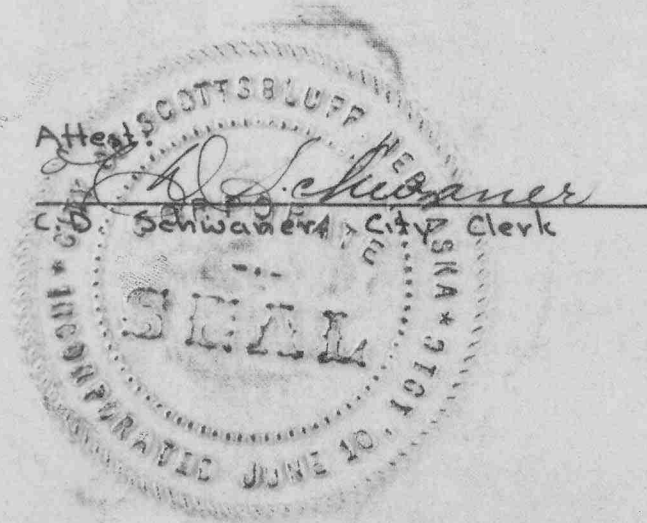
Notary Public

My Commission Expires: 27th Febr. 1963

- ACCEPTANCE -

The foregoing plat and dedication approved and accepted by the Mayor and Council of the City of Scottsbluff, Scotts Bluff County, Nebraska, by resolution duly passed this 9th day of October, 1961.

William E. Nichol
MAYOR



C. D. Schwaner
C. D. Schwaner, City Clerk

91084